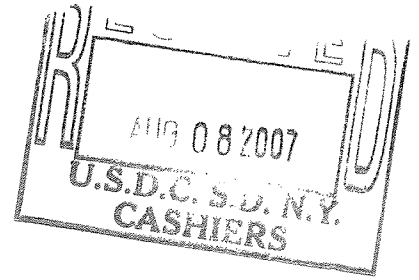


UNITED STATES DISTRICT COURT  
SOUTHERN DISTRICT OF NEW YORK



DR. STEVEN E. ROBBINS,

Plaintiff,

- against -

THE STRIDE RITE CORPORATION,

Defendant.

**COMPLAINT FOR PATENT  
INFRINGEMENT AND  
DEMAND FOR JURY  
TRIAL**

07 CIV 7069

**JUDGE SWAIN**

Plaintiff Dr. Steven E. Robbins (“Dr. Robbins”), by and through his undersigned counsel, Cohen & Gresser LLP, as and for his Complaint against Defendant The Stride Rite Corporation (“Stride Rite” or “Defendant”), hereby alleges, upon knowledge with respect to himself and his own acts, and upon information and belief as to all other matters, as follows:

**NATURE OF THE CASE**

1. This is a civil action for infringement of United States Patent No. 6,343,426 (“the ‘426 patent” or “the patent-in-suit”) brought pursuant to the United States patent laws, 35 U.S.C. § 271, *et seq.*

**PARTIES**

2. Dr. Robbins is a Canadian citizen and is the sole inventor and owner of the ‘426 patent.

3. On information and belief, Stride Rite is a corporation organized and existing under the laws of the State of Massachusetts, with its principal place of business at 191 Spring Street, Lexington, Massachusetts 02421.

4. Defendant manufactures and/or supplies and sells footwear products, including but not limited to SPERRY Gold Cup 2-eye shoes (the “Infringing Products”), to retailers across the United States, including retailers in this judicial district.

### **JURISDICTION AND VENUE**

5. This Court has exclusive subject matter jurisdiction over this action pursuant to 28 U.S.C. § 1338(a).

6. Venue is proper in this District under 28 U.S.C. §§ 1391 and 1400(b).

7. This Court has personal jurisdiction over Defendant because Defendant has conducted and does conduct business within the State of New York and in this judicial district. Directly and/or through intermediaries (including distributors, retailers, and others), Defendant ships, distributes, offers for sale, sells, and advertises its products in the United States, the State of New York, and this judicial district. Defendant has purposefully and voluntarily placed one or more of its Infringing Products into the stream of commerce with the expectation that said products will be purchased by consumers in this judicial district. The Infringing Products have been and continue to be purchased by consumers in this judicial district.

### **CLAIM FOR RELIEF**

8. The ‘426 patent, entitled “Resilient Sole for Use in Articles of Footwear to Enhance Balance and Stability,” was duly and legally issued by the United States Patent

and Trademark Office on February 5, 2002, after full and fair examination. A copy of the '426 patent is annexed hereto as Exhibit A.

9. Dr. Robbins is and always has been the sole owner of all rights, title, and interest in and to the '426 patent and possesses all rights of recovery under the '426 patent.

10. Claim 1 of the '426 patent is directed to a sole for use in articles of footwear, the sole having a resiliency index within a range set forth in the patent. Other claims of the '426 patent are further directed to the sole of Claim 1 further having a thickness and hardness within pre-defined ranges, and to articles of footwear that incorporate the claimed sole.

11. Defendant manufactures, imports into, offers for sale, sells, uses, designs, and/or develops, in the United States (and/or manufactures outside the United States and directs into the United States), either directly, or through its affiliates, subsidiaries and/or distributors, articles of footwear and soles, including the Infringing Products.

12. Defendant's Infringing Products have a resiliency index, thickness and hardness within the ranges claimed in the '426 patent.

13. Defendant has infringed and is infringing, literally or under the doctrine of equivalents, one or more claims of the '426 patent by practicing, without authority, one or more of the following acts: (a) making, using, offering to sell, and selling in the United States the invention of one or more claims of the '426 patent; and (b) importing into the United States the invention of one or more claims of the '426 patent.

14. In addition, Defendant has infringed and is infringing the '426 patent by (a) inducing infringement of one or more claims of the '426 patent; and (b) contributing to infringement of one or more claims of the '426 patent.

15. Defendant's acts of infringement have been and continue to be willful, knowing and deliberate.

16. Specifically, Dr. Robbins provided Defendant with a copy of the '426 patent and suggested a possible license arrangement, but Defendant did not respond.

17. As a direct and proximate result of Defendant's acts of infringement, Dr. Robbins has been, is being, and will be damaged. Consequently, Dr. Robbins is entitled to compensation for his damages from Defendant pursuant to 35 U.S.C. § 284 in an amount that cannot presently be quantified, but will be ascertained at trial.

18. As a direct and proximate result of Defendant's acts of infringement, Dr. Robbins has been irreparably harmed and will continue to be harmed unless and until Defendant's infringing acts are enjoined and restrained by order of this Court.

#### **PRAYER FOR RELIEF**

**WHEREFORE**, Plaintiff demands the following relief:

- (i) A judgment declaring that the '426 patent was duly and legally issued, is valid, and is enforceable;
- (ii) A judgment declaring that the Defendant has infringed the '426 patent as alleged herein;
- (iii) A judgment declaring that the Defendant has willfully infringed the '426 patent as alleged herein;

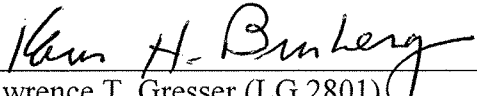
- (iv) A judgment and order awarding Plaintiff Dr. Robbins damages under 35 U.S.C. §284, including treble damages for willful infringement as provided by 35 U.S.C. §284, and supplemental damages for any continuing post-verdict infringement up until entry of the final judgment with an accounting as needed;
- (v) A judgment and order awarding Plaintiff Dr. Robbins pre-judgment and post-judgment interest on the damages awarded;
- (vi) A judgment and order declaring this to be an exceptional case and awarding Plaintiff the costs of this action (including all disbursements) and attorneys' fees as provided by 35 U.S.C. § 285;
- (vii) A judgment and order that the Defendant, its agents, employees, representatives, successors and assigns, and those acting in privity or in concert therewith, be permanently enjoined from further infringement of the '426 patent; and
- (viii) Such other and further relief as the Court deems just and equitable.

**DEMAND FOR JURY TRIAL**

Plaintiff hereby demands a jury trial as to all triable issues.

Dated: New York, New York  
August 8, 2007

**COHEN & GRESSER LLP**

  
Lawrence T. Gresser (LG 2801)  
Karen H. Bromberg (KB 2153)  
Alexandra Wald (AW 0225)  
Damir Cefo (DC 1507)  
100 Park Avenue, 23<sup>rd</sup> Floor  
New York, NY 10017  
(212) 957-7600

*Attorneys for Plaintiff  
Dr. Steven E. Robbins*

# Exhibit A



US006343426B1

(12) **United States Patent**  
**Robbins**

(10) **Patent No.:** US 6,343,426 B1  
(45) **Date of Patent:** Feb. 5, 2002

- (54) **RESILIENT SOLE FOR USE IN ARTICLES OF FOOTWEAR TO ENHANCE BALANCE AND STABILITY**
- (76) Inventor: **Steven E. Robbins**, 45 Birchview, Dollard des Ormeaux, Quebec (CA), H9A 2Y3
- (\*) Notice: Subject to any disclaimer, the term of this patent is extended or adjusted under 35 U.S.C. 154(b) by 618 days.
- (21) Appl. No.: **08/873,876**
- (22) Filed: **Jun. 12, 1997**

**Related U.S. Application Data**

- (63) Continuation of application No. 08/583,512, filed on Jan. 5, 1996, now abandoned, which is a continuation-in-part of application No. 08/366,587, filed on Dec. 29, 1994, now abandoned.
- (51) Int. Cl.<sup>7</sup> ..... **A43B 5/00**
- (52) U.S. Cl. .... **36/25 R; 36/44**
- (58) Field of Search ..... **36/25 R, 28, 43, 36/44**

**References Cited**

**U.S. PATENT DOCUMENTS**

4,435,910 A *	3/1984	Marc	36/44
4,502,234 A *	3/1985	Schaefer et al.	36/28
4,633,598 A *	1/1987	Moronaga et al.	36/44
4,633,877 A *	1/1987	Pendergast	36/44
4,766,679 A *	8/1988	Bender	36/30 R
4,823,779 A	4/1989	Daly et al.	
5,435,077 A *	7/1995	Pyle	36/43

**OTHER PUBLICATIONS**

Robbins, Steven, et al., "Athletic Footwear Affects Balance in Men", 1994, British Journal of Sports Medicine.  
 Robbins, Steven, et al., "Proprioception and Stability: Foot Position Awareness as a Function of Age and Footwear", 1995, Age and Ageing.

Robbins, Steven E., et al., "Sensory Attenuation Induced by Modern Athletic Footwear", 1988, Journal of Testing and Evaluation.

Robbins, Steven, "Shoe Thickness and Hardness Balance in Older Men", Journal of the American Geriatrics Society, 1992.

Steven E. Robbins et al., "Sensory Attenuation Induced by Modern Athletic Footwear", Journal of Testing and Evaluation, vol. 16, No. 4, Jul. 1988, pp. 412-416.

Steven Robbins, MD, et al., "Shoe Sole Thickness and Hardness Influence Balance in Older Men", J Am Geriatr Soc 40:1089-1094, 1992.

Steven Robbins et al., "Proprioception and Stability: Foot Position Awareness as a Function of Age and Footwear", Age and Aging 1995:24:67-72.

Stevens Robbins MD, et al., "Athletic footwear affects balance in men", Br J Sp Med 1994; 28(2), pp. 117-122.

\* cited by examiner

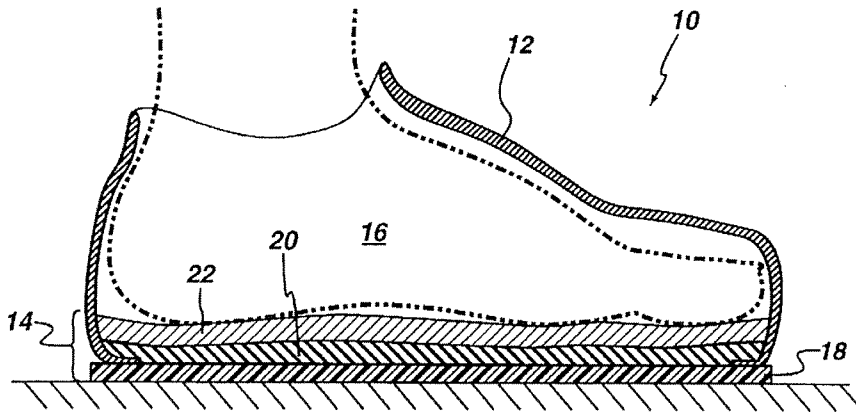
*Primary Examiner*—M. D. Patterson

(74) *Attorney, Agent, or Firm*—Fish & Richardson P.C.

(57) **ABSTRACT**

A resilient sole for use in an article of footwear. The sole has controlled stiffness and manifests a slow shape recovery following compression by the plantar surface of the foot. A footwear construction using a sole with such characteristics improves stability of users of all age groups, while enhancing comfort.

**18 Claims, 4 Drawing Sheets**



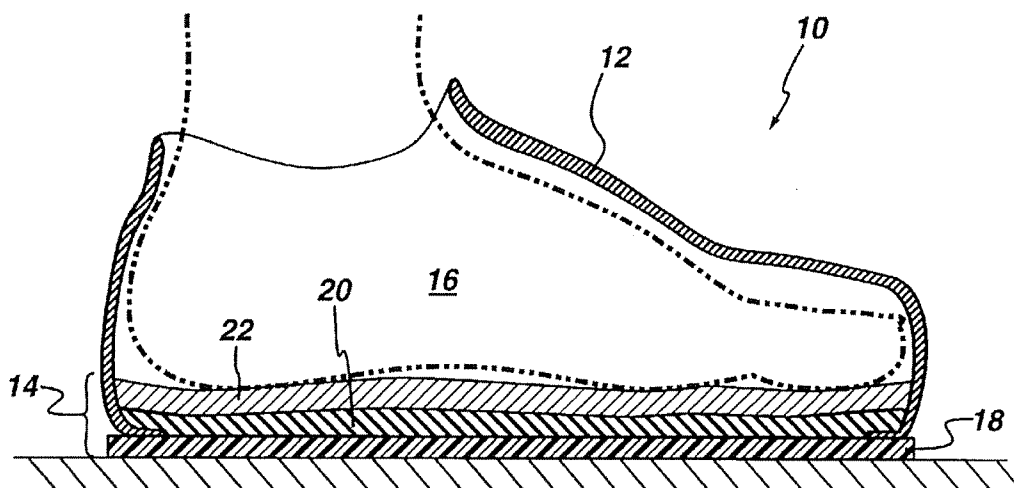


U.S. Patent

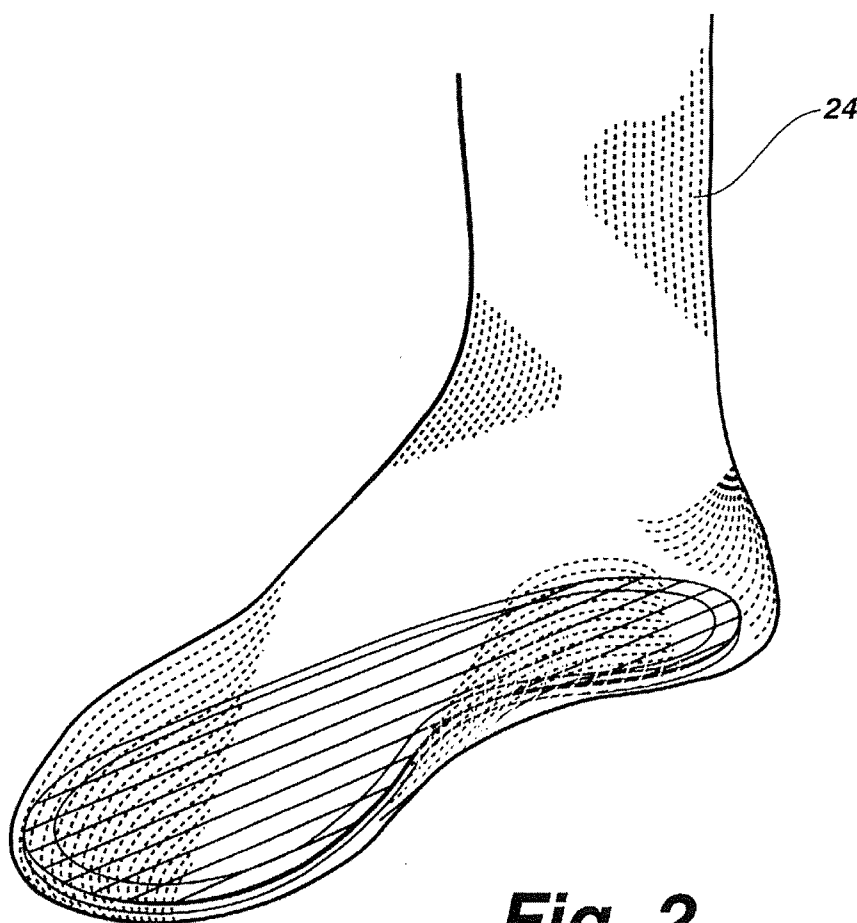
Feb. 5, 2002

Sheet 1 of 4

US 6,343,426 B1



**Fig. 1**



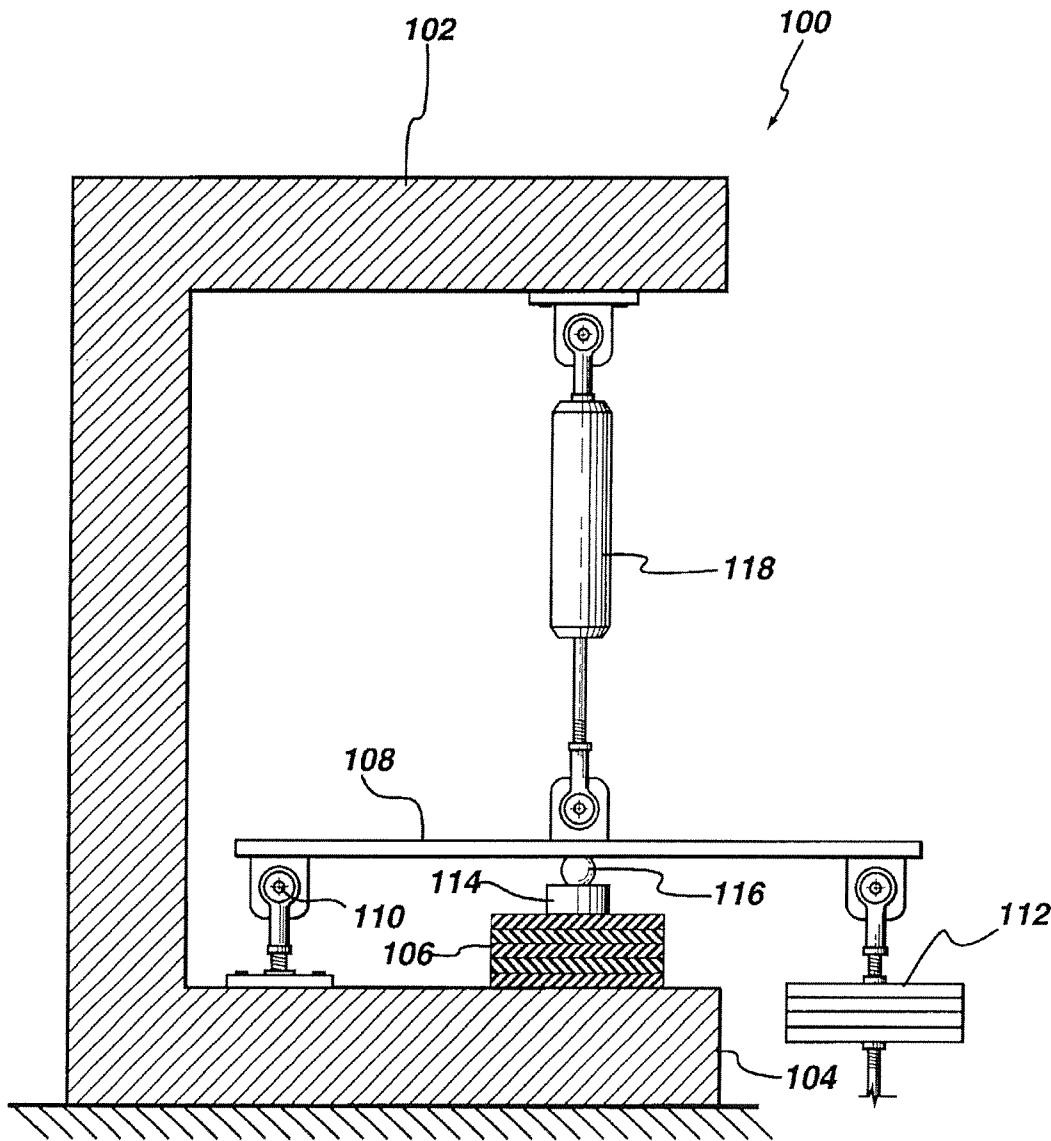
**Fig. 2**

U.S. Patent

Feb. 5, 2002

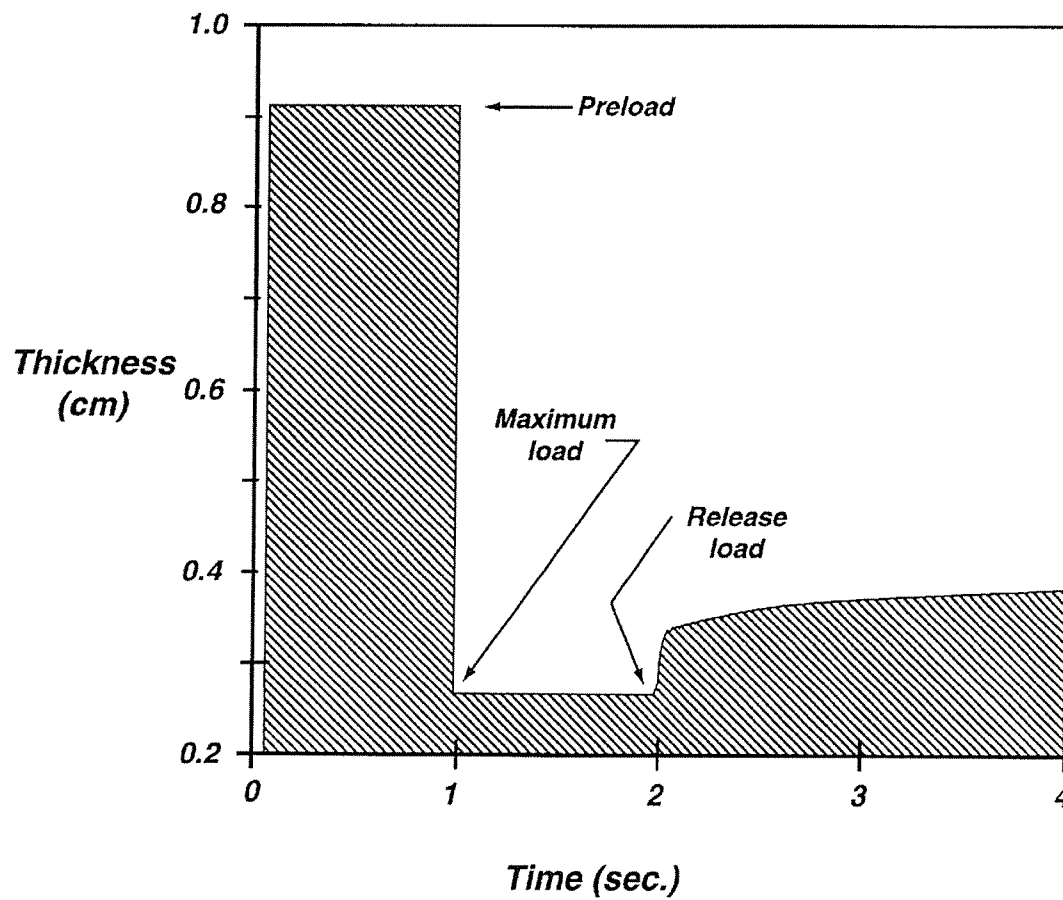
Sheet 2 of 4

US 6,343,426 B1



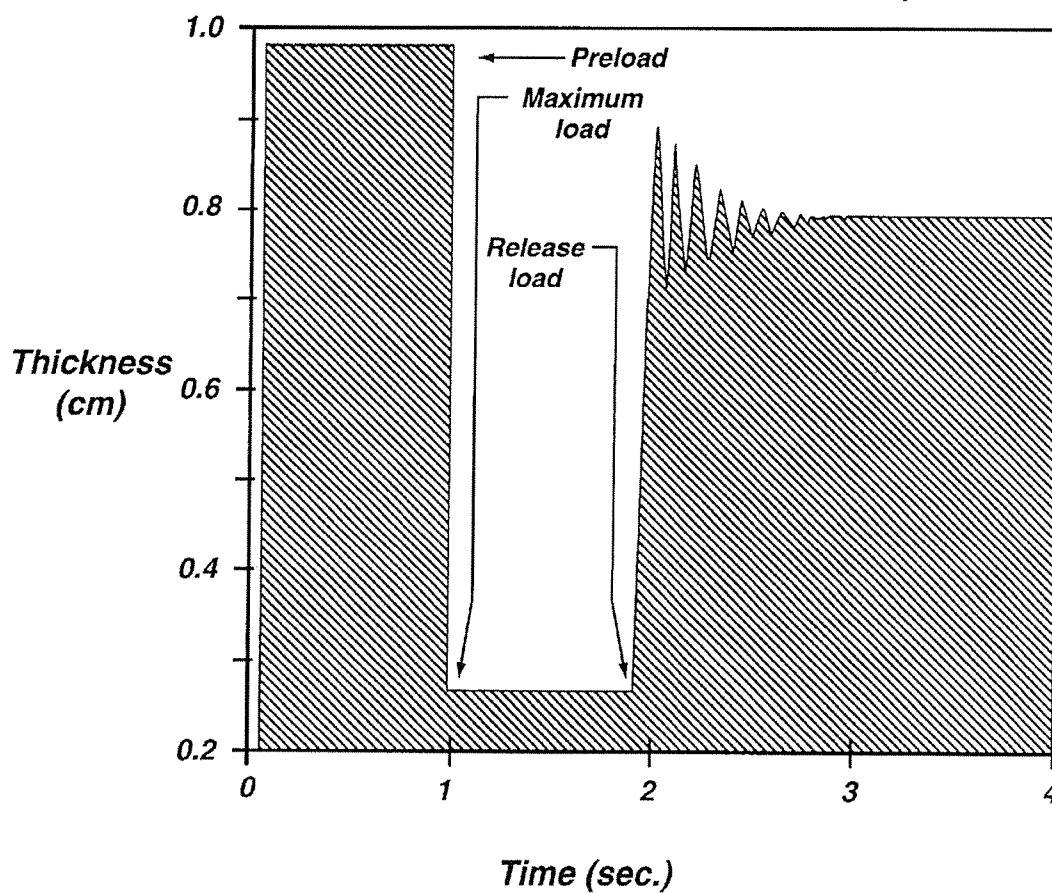
**Fig. 3**

**Material Compression Test :  
Shore A5 Aerated PVC polymer foam  
("Tennis Embedded Floor Matting")**



**Fig. 4**

*Material Compression Test :*  
**Shore A5 EVA**  
*(Commonly used in shoe soles)*



**Fig. 5**

US 6,343,426 B1

1

**RESILIENT SOLE FOR USE IN ARTICLES  
OF FOOTWEAR TO ENHANCE BALANCE  
AND STABILITY**

This is a continuation of application Ser. No. 08/583,512, 5  
filed Jan. 5, 1996, now abandoned, which is a continuation-  
in-part of application Ser. No. 08/366,587, filed Dec. 29,  
1994 now abandoned.

**FIELD OF THE INVENTION**

The present invention relates to the art of footwear 10  
construction, more particularly to an improved resilient sole  
for use in an article of footwear in proximity to the plantar  
surface of the foot. The sole has a controlled stiffness and  
exhibits a slow shape recovery following compressive deforma-  
tion that provides an enhanced stability. The invention  
also extends to an article of footwear incorporating the  
improved sole.

**BACKGROUND OF THE INVENTION**

Most footwear currently purchased are constructed with 15  
soft, highly resilient materials in their soles mainly because  
users find them more comfortable than stiff soled footwear.  
In addition, shoes with soft, highly resilient soles are thought  
to benefit athletic users through "cushioning" impacts nor-  
mally encountered during locomotion or running. Further-  
more, these shoes are sometimes thought to provide  
optimal gait for geriatric users who suffer from frequent falls  
due to loss of balance.

When these notions are examined scientifically, there is 20  
evidence that shoes with soft, highly resilient soles are more  
comfortable than those with stiffer soles. However, soft  
resilient soled shoes are not superior in cushioning impact  
when humans use them. More importantly, recently con-  
ducted clinical research clearly suggests that soft highly  
resilient soled shoes actually destabilize humans of all age  
groups. In this regard, the reader may refer to the articles  
entitled "SHOE SOLE THICKNESS AND HARDNESS  
INFLUENCE BALANCE IN OLDER MEN" published in 1992, in the 25  
Journal of the American Geriatrics Society, and  
"ATHLETIC FOOTWEAR AFFECT BALANCE IN  
MEN", published in 1994, in the British Journal of Sports  
Medicine, both authored by the present inventor, demon-  
strating that stability is impaired in humans of all age groups  
when sole thickness increases and stiffness decreases. The  
mechanism causing instability appears complex and varies  
by age. The present inventor has reported in an article  
published in 1995, in Age and Ageing, entitled "PROPRIO- 30  
CEPTION AND STABILITY: FOOT POSITION AWARE-  
NESS AS A FUNCTION OF AGE AND FOOTWEAR",  
that the mechanism may consist of rapid plantar surface  
angulation caused by material compression causing loss of  
foot position awareness. Another possible cause of instabil-  
ity reported by the present inventor in 1988, in the Journal 35  
of Testing and Evaluation, entitled "SENSORY ATTENU-  
ATION CAUSED BY MODERN ATHLETIC  
FOOTWEAR", consists of sensory insulation caused by the  
yielding material distributing load more evenly across the  
plantar surface resulting in a loss of proprioception. The 40  
U.S. Pat. No. 4,823,779 issued on Apr. 25, 1989, to the  
present inventor describes in greater detail the notion of  
sensory insulation in footwear applications. Another mecha-  
nism could be an unstable support base caused by "base  
shifting" or tilting of the plantar surface with every gait 45  
cycle, or a highly resilient material causing an "under-  
damped" condition characterized by surface oscillation

2

when load is released rapidly and surface rebound when 5  
compressed rapidly, both conditions occurring during loco-  
motion. Oscillations can be observed when load was  
removed during resiliency testing of a highly resilient mate-  
rial typically used in footwear soles.

In short, footwear design using comparatively stiff and 10  
thin soles is a sound approach from the perspective of  
stability enhancement, but is not satisfactory for most con-  
sumers because this design yields less comfortable shoes.  
Therefore, a clear need exists in the industry to improve the  
comfort of footwear without resorting to highly resilient sole  
materials known to impair stability.

**OBJECTIVES AND STATEMENT OF THE  
INVENTION**

An object of the invention is to provide a sole for an 15  
article of footwear that offers good stability and yet pos-  
sesses a good comfort rating.

Another object of the invention is an article of footwear 20  
utilizing the aforementioned sole.

The present inventor has made the unexpected discovery 25  
that a sole made of a material having a low resiliency offers  
enhanced stability during locomotion while providing a  
degree of comfort comparable to what prior art soles made  
of materials having a highly resilient character.

From a functional point of view, the sole of a shoe can be 30  
viewed as a base on which the foot of the wearer rests. In the  
case of a highly resilient material the recompression activity  
taking place at every footstep produces a downward move-  
ment of the interface plantar surface/sole, causing a transi-  
tory "base shifting" event and perhaps surface oscillation  
from rebound which may destabilize the wearer. In contrast,  
a sole made from a low resiliency material offers a much  
more stable base because the material remains in a com-  
pressed condition between footstep without "base shifting" 35  
or rebound. This is referred to an "overdamped" condition.

A low resiliency material is characterized by good shape 40  
retention properties, "overdamping" characterized by reduc-  
tion of surface oscillation and lack of rebound on  
compression, and lack of repeated "base shifting" on recom-  
pression. For instance, once the material is subjected to rapid  
physical deformation there is little or no rebound. Further,  
when the source of the deformation is removed, it manifests  
a shape recovery activity as any highly resilient material  
does, but at a much slower pace, without surface oscillation. 45  
In footwear applications this property enables a sole to  
acquire the shape of the foot for a comparatively long time  
period, therefore there is no "base shifting" on recompres-  
sion because when the compressive effort acting on the sole  
is temporarily discontinued, such as when the individual  
raises his foot off the ground during gait, the material of the  
sole does not have enough time to return to its original  
configuration. In contrast, a traditional sole made of highly  
resilient material may rebound when loaded. Further it  
immediately springs back to its native configuration, per- 50  
haps with surface oscillations typical of an "underdamped"  
system. As a result, when the foot pressure is re-applied  
during the following footstep the sole is in a vertically  
expanded condition and produces repeated "base shifts", and  
perhaps rebound and surface oscillation.

The compressed, relatively stiff sole surface encountered 55  
by the foot during gait does not create undue discomfort  
because the sole conforms to the topography of the plantar  
surface and provides a relatively uniform pressure distribu-  
tion. In comparison, a flat and substantially unyielding sole  
creates stress points due to locally acting forces and it is  
usually perceived by the wearer as being less comfortable.



US 6,343,426 B1

3

As embodied and broadly described herein the invention provides a material for use in an article of footwear in proximity to a plantar surface of the foot, said material having a resiliency index in the range from about 0.05 to about 0.5.

The resiliency index is a custom parameter established to quantify the resiliency of the sole following compressive deformation. The test procedure to determine the resiliency index involves observing the amount of shape recovery with relation to time following a predetermined compressive deformation.

More preferably, the resiliency index of the material is in the range from about 0.1 to about 0.35 and most preferably in the range from about 0.1 to about 0.2. In a preferred embodiment, the sole has a hardness in the range from about Shore A2 to about Shore A40. More preferably, the hardness is in the range from about Shore A2 to about Shore A14.

For the purpose of this specification, the term "sole" is intended to designate all or part of the structures intended to be located in proximity to the plantar surface of the foot, i.e., either in direct contact or at a short distance from the plantar surface. As an example, when the article of footwear is in the form of a shoe, "sole" designates the material forming the bottom or a layer of the bottom of the shoe such as the sockliner, insole, midsole and the outer sole as well in some specific applications, or a constituent of these parts. In the case of sockliner and insole, it may be removable from the shoe.

The sole does not need to extend under the entire plantar surface. A structure extending only under the ball of the foot or under the heel will be considered a "sole".

The article of footwear may be a shoe, boot or sock, among others. In the case of a sock, the sole would normally constitute the bottom part of the foot covering material, in a facing relationship with the plantar surface.

As embodied and broadly described herein, the invention also provides an article of footwear including a sole in proximity of a foot receiving surface of said article of footwear, said sole having a resiliency index in the range from about 0.05 to about 0.5.

#### BRIEF DESCRIPTION OF THE DRAWINGS

FIG. 1 is a vertical cross-sectional view of a shoe including the sole in accordance with the present invention, the cross-section being taken along the longitudinal axis of the shoe;

FIG. 2 is a perspective view of a sock incorporating the sole in accordance with the present invention;

FIG. 3 is a graphical illustration of a set-up for performing a test procedure to measure a resiliency index;

FIG. 4 is a graph illustrating the rate of shape recovery versus time of a material particularly well suited for use as a sole in accordance with the invention; and,

FIG. 5 is a graph illustrating the rate of shape recovery versus time of a material not well suited for use as a sole in accordance with the invention.

#### DESCRIPTION OF PREFERRED EMBODIMENTS

With reference to the annexed drawings, FIG. 1 illustrates a shoe designated comprehensively by the reference numeral 10, using the improved sole in accordance with the present invention. The shoe 10 includes a vamp 12 secured to a bottom 14 to form a foot receiving enclosure 16.

4

The present invention is concerned with the construction of the bottom 14 that determines in large part the comfort potential of the shoe 10 and its stability. The bottom 14 is a layered structure comprising an outer sole 18 made of carbon rubber. If desired, the surface of the outer sole that contacts the ground may be sculptured to create a tread pattern. The outer sole 18 is bonded in a face-to-face relationship with a midsole 20 made of expanded polymer, such as ethylene-vinyl acetate (EVA) copolymer. The midsole has a thickness of about 5 mm and it is comparatively hard (a hardness in excess of A40 is preferred).

The upper layer of the shoe bottom 14 is constituted by an insole 22 that is bonded to the upper surface of the midsole 20. The insole is made from a material selected to provide a resiliency index in the range from about 0.05 to about 0.5, preferably from about 0.1 to about 0.35 and most preferably from about 0.1 to about 0.2.

The resiliency index is a custom parameter designed to quantify the rate of recovery of a material with relation to time following a compressive deformation. The measurement procedure is a modification of the standard test ASTM F36-88 designed for assessing compressibility and recovery of gasket materials. FIG. 3 illustrates schematically the testing set-up 100 which comprises a frame 102 having a flat base portion 104 supporting the test specimen 106. A horizontally extending arm 108 is pivotally mounted at 110 to the base portion 104 of the frame. A main load 112 of 3.17 kg is suspended from the free extremity of the arm 108. The distance between the point 110 and the site on the arm 108 at which the main load is attached is 30.48 cm. An anvil 114 made of hardened metallic material is provided for locally compressing the test sample 106. The anvil 114 is in the form of a cylinder having a diameter of 31.8 mm. The horizontal arm 108 applies pressure to the anvil 114 by the intermediary of a ball made of hard metallic material having a diameter of 15.9 mm.

The rate of recovery upon removal of the sample is measured by a linear variable displacement transducer 118 having a maximum range of 2.54 cm (a Penny/Giles transducer available from Durham Instruments, Ontario, Canada has been found satisfactory).

The testing procedure consists of positioning a test specimen having an area of 20 square centimeters (cm<sup>2</sup>) and a thickness (uncompressed) of 50 mm. The test specimen may entail a single ply or a number of superimposed plies sufficient to give the desired nominal thickness (if there are several plies they should not be bonded or otherwise attached to one another). The assembly formed by the anvil 114, ball 116 and arm 108 (free of the main load 112) is first deposited on the test specimen for a duration of 15 seconds (sec) to create a preload condition of 0.9 kg. This value is the weight that the surface of the specimen "sees" before the application of the main load. The individual weight of the various components, such as the arm 108, ball 116, anvil 114, etc., contributes to this preload condition, thus the materials of these components and their dimensions should be selected to achieve a combined weight creating the desired preload value. The main load 112 of 3.17 kg is then applied to the anvil for a period of 1 minute (min). The main load 112 is instantly removed and the recovery of the test sample is recorded for a period of at least 2 sec. The resiliency index is expressed by the following formula:

US 6,343,426 B1

5

$$\frac{R - M}{P - M}$$

where:

R: peak recovered thickness observed within the one second time frame immediately following the removal of main load;

M: thickness under preload and main load; and

P: thickness under preload.

Values R, M and P can be expressed in centimeters (the same units of measure are used for each factor).

It is important to note that the resiliency index of the sole 22 is assessed with the sole removed from the shoe 10, otherwise the results may be corrupted. For composite materials having a variable resiliency index over their surface, the measurement is performed in the region receiving the ball of the foot or the region receiving the heel. Indeed, structures that exhibit different resiliency indices at the ball region and at the heel region are similar to two soles placed side by side. In other words, the ball region is considered to form one sole while the heel region forms another sole. This definition is consistent with the meaning given to "sole" earlier in this specification. More specifically a layer of material does not need to extend under the entire plantar surface to form a sole; the layer may extend only under the ball region or under the heel region to be considered a sole.

The benefits of the invention are realized best when the insole 22 has a hardness within a predetermined range selected to enhance stability. The hardness should be in the range from about Shore A 2 to about Shore A 40, preferably from about Shore A 2 to about Shore A 14. Hardness is measured according to the standard test method for determining rubber property-durometer hardness (Annual book of ASTM Standards, Phila., ASTM, 1988, 09.01, pp 596-600). As in the case of the resiliency index measurement, hardness is determined on a sample separated from the shoe.

The sole 22 preferably has a thickness in the range from about 2 millimeters to about 50 millimeters, more preferably from about 5 millimeters to about 25 millimeters and most preferably from about 12 millimeters to about 20 millimeters.

Expanded polymer, available from Pandel Inc., Atlanta Ga., USA under the designation "TENNIS EMBEDDED FLOOR MATTING" is the material of choice for manufacturing the sole 22. This material is a PVC aerated polymer foam of Shore A5 hardness. FIG. 4 illustrates the low resiliency properties of this material. The resiliency index is assessed with the formula (R-M)/(P-M). The parameters P and M have values of 0.92 cm and 0.28 cm, respectively. R is the peak recovery value within the 2 and 3 second marks on the time axis. The peak is found at the 3 second mark and has a value of 0.38. This produces a resiliency index of 0.156.

FIG. 5 illustrates for comparison purposes the recovery pattern of EVA polymer aerated into expanded foam that is commonly used in athletic footwear. This material is considered unsuitable for use in an article of footwear, from the perspective of the present invention, because it is too resilient. The resiliency index of the EVA polymer is about 0.714.

A variant of the invention is illustrated in FIG. 2. Here, the improved sole is made part of a sock 24. More particularly, the sole is sewn or otherwise attached to the material enclosing the foot, so it faces the plantar surface of the foot.

6

The above description of preferred embodiments should not be interpreted in any limiting manner since variations and refinements are possible without departing from the spirit of the invention. The scope of the invention is limited by the terms of the following claims and their equivalents.

I claim:

1. A sole for use in an article of footwear in proximity to a plantar surface of a foot, said sole having a resiliency index in the range from about 0.05 to about 0.5, the resiliency index being defined as a ratio (R-M)/(P-M), wherein P is a thickness measured when only a pre-load is applied, M is a thickness measured when both the pre-load and a main load are applied, and R is the maximum recovered thickness within one second immediately following removal of the main load.
2. A sole as defined in claim 1, having a resiliency index in the range from about 0.1 to about 0.35.
3. A sole as defined in claim 1, having a resiliency index in the range from about 0.1 to about 0.2.
4. A sole as defined in claim 1, having a thickness in the range from about 2 millimeters to about 50 millimeters.
5. A sole as defined in claim 4, having a thickness in the range from about 5 millimeters to about 25 millimeters.
6. A sole as defined in claim 4, having a thickness in the range from about 12 millimeters to about 20 millimeters.
7. A sole as defined in claim 1, having a hardness in the range from about Shore A2 to about Shore A 40.
8. A sole as defined in claim 1, including synthetic material.
9. An article of footwear including a sole in proximity of a foot receiving surface of said article of footwear, said sole having a resiliency index in the range from about 0.05 to about 0.5, the resiliency index being defined as a ratio (R-M)/(P-M), wherein P is a thickness measured when only a pre-load is applied, M is a thickness measured when both the pre-load and a main load are applied, and R is the maximum recovered thickness within one second immediately following removal of the main load.
10. An article of footwear as defined in claim 9, wherein said sole has a resiliency index in the range from about 0.1 to about 0.35.
11. An article of footwear as defined in claim 9, wherein said sole has a resiliency index in the range from about 0.1 to about 0.2.
12. An article of footwear as defined in claim 9, wherein said sole has a thickness in the range from about 2 millimeters to about 50 millimeters.
13. An article of footwear as defined in claim 9, wherein said sole has a thickness in the range from about 5 millimeters to about 25 millimeters.
14. An article of footwear as defined in claim 9, wherein said sole has a thickness in the range from about 12 millimeters to about 20 millimeters.
15. An article of footwear as defined in claim 9, wherein said sole has a hardness in the range from about Shore A 2 to about Shore A 40.
16. An article of footwear as defined in claim 9, wherein said sole includes synthetic material.
17. An article of footwear as defined in claim 9, wherein said sole has an upper surface constituting said foot receiving surface.
18. An article of footwear as defined in claim 9, wherein said article of footwear is selected from the group consisting of a shoe, boot and sock.

\* \* \* \* \*